



TrialFusion

Simplifying Courtroom Technology



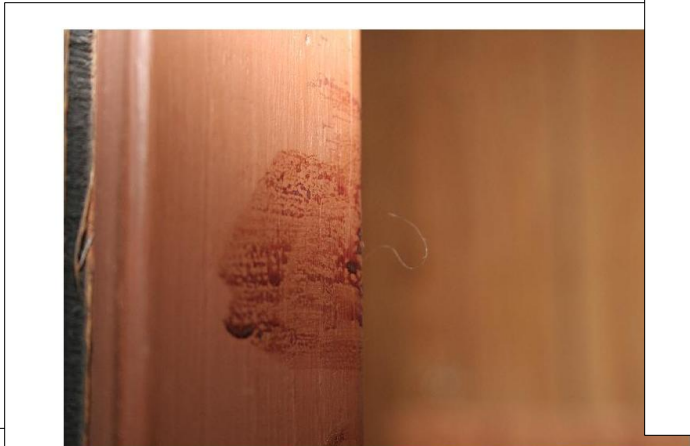
State's Exhibit



State's Exhibit



State's Exhibit



State's Exhibit



State's Exhibit



State's Exhibit



State's Exhibit

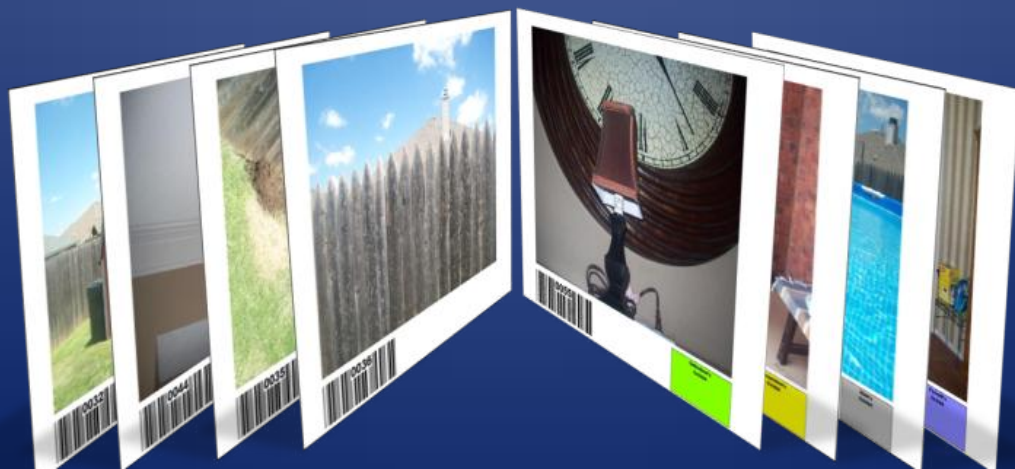
How does it work in court?

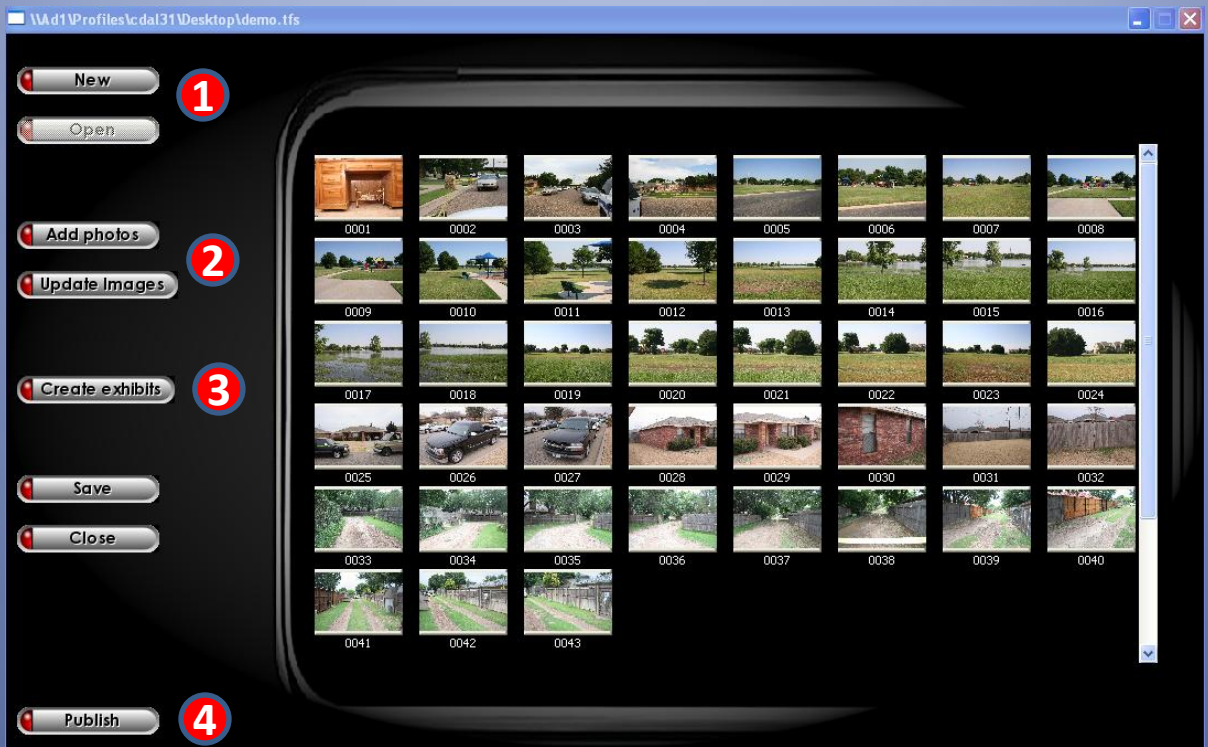
Your TrialFusion photo exhibits will be created with a TrialFusion barcode and be assigned a number within the file.



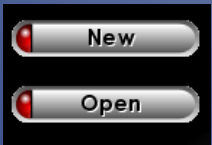
Pre-printed exhibits of any color may also be attached.

Your TrialFusion photos can then be marked as you enter them in trial and retrieved by scanning the TrialFusion barcode or entering its TrialFusion ID number.





Step 1



Step 1 is to start a new trial presentation or to open a presentation that has already been created.

Step 2



Step 2 allows you to insert photos into your trial presentation. By clicking this button, the

program will allow you to browse your computer to locate your photos. Select the photos to insert and place them in the file. If additional photos need to be added, click “Add photos” again.

By clicking the photo while it is in the TrialFusion window, you can rotate or delete the photo. “Update Images” will show your changes in the window.

Step 3



Step 3 allows you to create your exhibits for printing. You

may choose to place an exhibit sticker on your exhibits and select its color. You may select “All” or designate a range of photos to be printed. TrialFusion will then create your trial exhibits into a separate folder for printing. Once the exhibits have been printed this folder is no longer needed.

Step 4



Step 4 is full screen mode used in trial and in conjunction with the barcode scanner.

Publishing to the jury

TrialFusion offers two ways of publishing to the jury.



“Full Screen” publishes from your laptop to the projector/tv in the mode similar to PowerPoint. It encompasses your whole viewing area.



“Window” publishes your TrialFusion exhibits in pre-set windows that will work in conjunction with an extended desktop mode (<http://www.microsoft.com/windowsxp/using/setup/hwandprograms/monitors.mspx>) on your laptop. Two sizes are offered to assist in resolution settings.